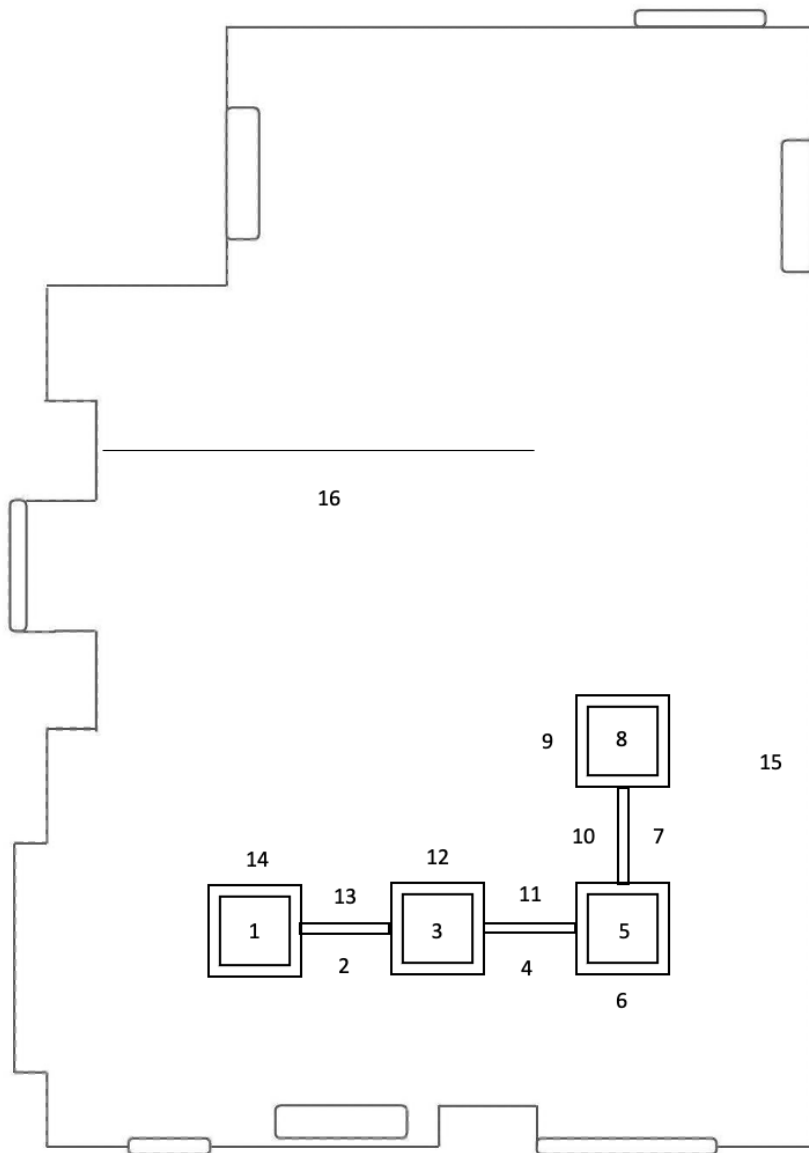


Map: Land's End



1 *Chest Up (3)*, 2022. Plaster, 56 x 33 x 40 cm.

2 *Cardinal Direction 2 HAI*, 2022. Two gouache and coloured pencil paintings on Arches paper on six watercolour and coloured pencil paintings on museum board, 180 x 180 cm.

3 *Chest Up (4)*, 2022. Plaster, 58 x 36 x 36 cm.

4 *Cardinal Direction 3 TEL*, 2022. Two gouache and coloured pencil paintings on Arches paper on six watercolour and coloured pencil paintings on museum board, 180 x 180 cm.

5 *Chest Up (2)*, 2022. Plaster, 59 x 35 x 35 cm.

6 *John's Fan (From the series Making it all right)*, 2022. Ceramic, 51 x 34 x 3.5 cm.

7 *Cardinal Direction 6 REH*, 2022. Two gouache and coloured pencil paintings on Arches paper on six watercolour and coloured pencil paintings on museum board, 180 x 180 cm.

8 *Chest Up (1)*, 2022. Plaster, 59 x 40 x 35 cm.

9 *Remo (From the series Making it all right)*, 2022. Ceramic, 58 x 35 x 3 cm.

10 *Cardinal Direction 4 RAA*, 2022. Two gouache and coloured pencil paintings on Arches paper on six watercolour and coloured pencil paintings on museum board, 180 x 180 cm.

11 *Cardinal Direction 1 JER*, 2022. Two gouache and coloured pencil paintings on Arches paper on six watercolour and coloured pencil paintings on museum board, 180 x 180 cm.

12 *The Pipe and piper (From the series Making it all right)*, 2022. Ceramic, 57 x 34 x 2.5 cm.

13 *Cardinal Direction 5 HOD*, 2022. Two gouache and coloured pencil paintings on Arches paper on six watercolour and coloured pencil paintings on museum board, 180 x 180 cm.

14 *Take it all away with c (From the series Making it all right)*, 2022. Ceramic, 63 x 36 x 4 cm.

15 *Pam's Second Table*, 2022. Oil and acrylic on six wooden panels, 152 x 546 cm.

16 *The Bed Fire Breather*, 2022. Oil on wood, 90 x 70 cm.